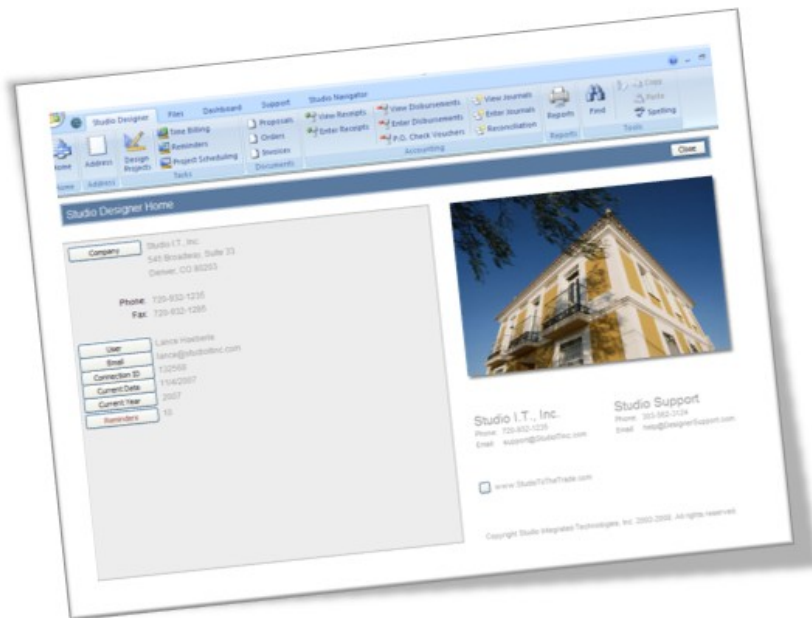


## Studio Premier Maintenance

Studio Premier Maintenance Summary	2
How to register for Studio Navigator	3
How to subscribe to Studio Premier Maintenance	5
Downloading Studio Designer Updates	6
Downloading Studio Showroom / Manufacturer Updates	7
Training Classes	8
Studio Navigator Online Product Catalog	9



[www.StudioNavigator.com](http://www.StudioNavigator.com)  
360 779-7673

Studio Navigator  
PO Box 2940  
Poulsbo, WA 98370

## Studio Premier Maintenance Summary

Studio Premier Maintenance provides access to the latest technologies from Studio I.T. This access includes downloading Studio I.T. software updates for Studio Designer and Studio Showroom / Manufacturer. You receive unlimited access to online training classes offered by Studio Support. Studio Premier Maintenance also includes access to the Studio Navigator online catalog.

### Monthly Subscription

- A monthly subscription is available for \$35 per month
- There is a \$150 setup fee to reenroll subscriptions that expire

### Studio Designer Updates

- Receive email notification of updates to Studio Designer
- Download updates to Studio Designer

### Studio Showroom / Manufacturer Updates

- Receive email notification of updates to Studio Showroom / Manufacturer
- Download Updates to Studio Showroom / Manufacturer

### Training Classes from Studio Support

- Free online training classes from Studio Support from beginner to advanced

### Studio Navigator Online Product Catalog

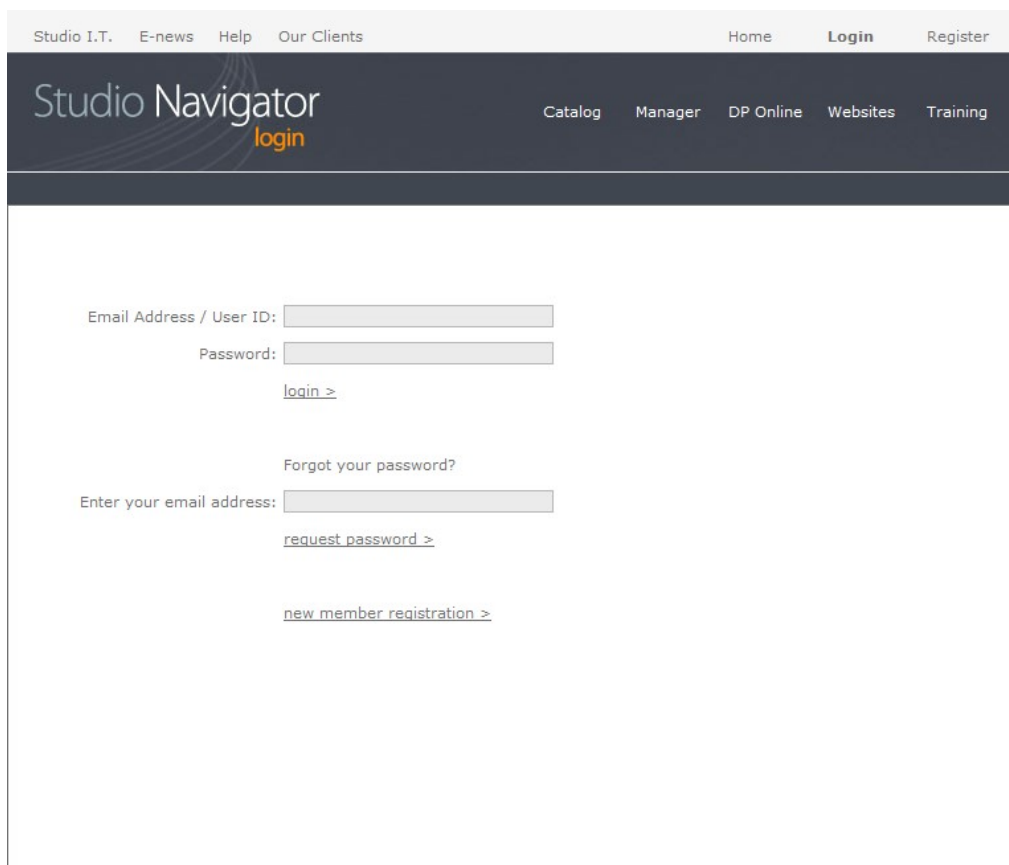
- Search, find and download product information from manufacturers to the trade
- Designers transfer product information with images to design projects
- Showrooms transfer product information with images to quotes and orders

## How to register for Studio Navigator

To take advantage of Studio Premier Maintenance, you must be registered with Studio Navigator. If you are a Studio I.T. client, you may already be registered with Studio Navigator.

If you are not sure what your password is

- Go to [www.studionavigator.com](http://www.studionavigator.com)
- Select **Login**
- Enter your email address, under forgot your password?
- Select **Request Password**
- Your user ID and password will be emailed to you



The screenshot shows the Studio Navigator login page. At the top, there is a navigation bar with links for Studio I.T., E-news, Help, Our Clients, Home, Login, and Register. Below this is a dark header with the Studio Navigator logo and the word 'login' in orange. To the right of the logo are links for Catalog, Manager, DP Online, Websites, and Training. The main content area contains a login form with two input fields: 'Email Address / User ID:' and 'Password:'. Below the password field is a 'login >' button. Underneath is a 'Forgot your password?' section with an input field for 'Enter your email address:' and a 'request\_password >' button. At the bottom of the form is a 'new member registration >' link.

To register for Studio Navigator

- Go to [www.studionavigator.com](http://www.studionavigator.com)
- Select **Register**
- Enter your information
- Select **Submit Registration**
- You will receive an email with your User ID and Password

The screenshot shows the registration page for Studio Navigator. At the top, there is a navigation bar with links for Studio I.T., E-news, Help, Our Clients, Home, Login, and Register. Below this is a dark header with the Studio Navigator logo and the word 'register' in orange, along with links for Catalog, Manager, DP Online, Websites, and Training.

The main content area contains a registration form with two sections:

- Company Information:** This section includes input fields for Company Name, Address, City, Postal Code, Phone, and Fax, all marked with an asterisk (\*). It also features dropdown menus for State or Province (with 'Select a state' as the placeholder) and Country (with 'USA' as the selected option). There is also a dropdown for Company Type (with 'Select a company type' as the placeholder).
- Personal Information:** This section includes input fields for First Name, Last Name, Mobile, and Email, all marked with an asterisk (\*). Below these fields is a checkbox labeled 'I have read and agree to the [terms and conditions](#).' followed by an asterisk (\*).

At the bottom of the form, there is a note: '\* marks a required entry' and a blue link: [submit registration >](#)

## How to subscribe to Studio Premier Maintenance

After you are registered with Studio Navigator, you can subscribe to Studio Premier Maintenance. If you are not registered with Studio Navigator, please see the section **How to register for Studio Navigator**.

### Login to Studio Navigator

- Go To [www.StudioNavigator.com](http://www.StudioNavigator.com)
- Select **Login**
- Enter your **Email Address / User ID** and **Password**

### Subscribe to Studio Premier Maintenance in My Account

- Select **Connections**
- Select **My Account**
- Select **My Subscriptions**
- Select the **Studio Premier Maintenance** option
- Select **Proceed to Checkout**
  
- Check **I have read and agree to the terms and conditions**
- Select **Proceed to Payment**
  
- Follow the steps to enter your credit card information and submit your payment

## Downloading Studio Designer Updates

Studio Navigator sends email notifications regarding updates to programs. You must register with the opt-in email list to receive update notifications.

To register for the opt-in email list

- Go to <http://www.studionavigator.com/welcome/sn1/sn1signin/sn1emailregister.htm>
- Enter your **Email Address**
- Select **Submit**

To download updates to Studio Designer

- Log out of Studio Designer on all workstations
- Login to Studio Navigator
- Select **Connections**
- Select **Downloads**
- Select **Studio Designer Update** x.xx
- Save the **StudioDesigner.mde** to your desktop
- Copy the **StudioDesigner.mde** to the StudioDesigner folder on the server

Details on how to download the Studio Designer update

- <http://www.studionavigator.com/studionav/docs/feature/sn%20connections%20downloads.pdf>

## Downloading Studio Showroom / Manufacturer Updates

Studio Navigator sends email notifications regarding updates to programs. You must register with the opt-in email list to receive update notifications.

To register for the opt-in email list

- Go to <http://www.studionavigator.com/welcome/sn1/sn1signin/sn1emailregister.htm>
- Enter your **Email Address**
- Select **Submit**

To download updates to Studio Showroom / Manufacturer

- Log out of Studio Showroom on all workstations
- Login to Studio Navigator
- Select **Connections**
- Select **Downloads**
- Select **Studio Showroom Update** x.xx
- Save the **StudioShowroom.mde** to your desktop
- Copy the **StudioShowroom.mde** to the StudioShowroom folder on the server

Details on how to download the Studio Showroom / Manufacturer update

- <http://www.studionavigator.com/studionav/docs/feature/sn%20connections%20downloads.pdf>

## Training Classes

You receive unlimited access to group online training classes offered by Studio Support while your Studio Premier Maintenance subscription is active.

Studio Support classes include

- Design Projects Basic
- Design Projects Advanced
- Accounting Basic
- Accounting Advanced
- Inventory and Point of Sale
- Inventory Advanced

To register for training classes

Login to Studio Navigator

- Go To [www.StudioNavigator.com](http://www.StudioNavigator.com)
- Select **Login**
- Enter your **Email Address / User ID** and **Password**

Register for classes

- Select the **Connections** tab
- Select **Training**
- Register for the classes you would like to attend

Training classes are limited in size and must be reserve 1 day in advance.

The Studio Support training classes and availability may change without notice.

## Studio Navigator Online Product Catalog

The online product catalog allows designers to search for products from manufacturers to the trade. Product information and digital images can be transferred to design projects with a click of the mouse.

### Product catalog features

- Search for products from high end manufacturers to the trade
- Select products for transfer to Studio Designer
- Select products for transfer to Studio Showroom / Manufacturer
- Link to manufacturer's website

### Learn more about the product catalog

- Link to [http://www.studionavigator.com/studionav/docs/feature/sn\\_catalog\\_designer.pdf](http://www.studionavigator.com/studionav/docs/feature/sn_catalog_designer.pdf)